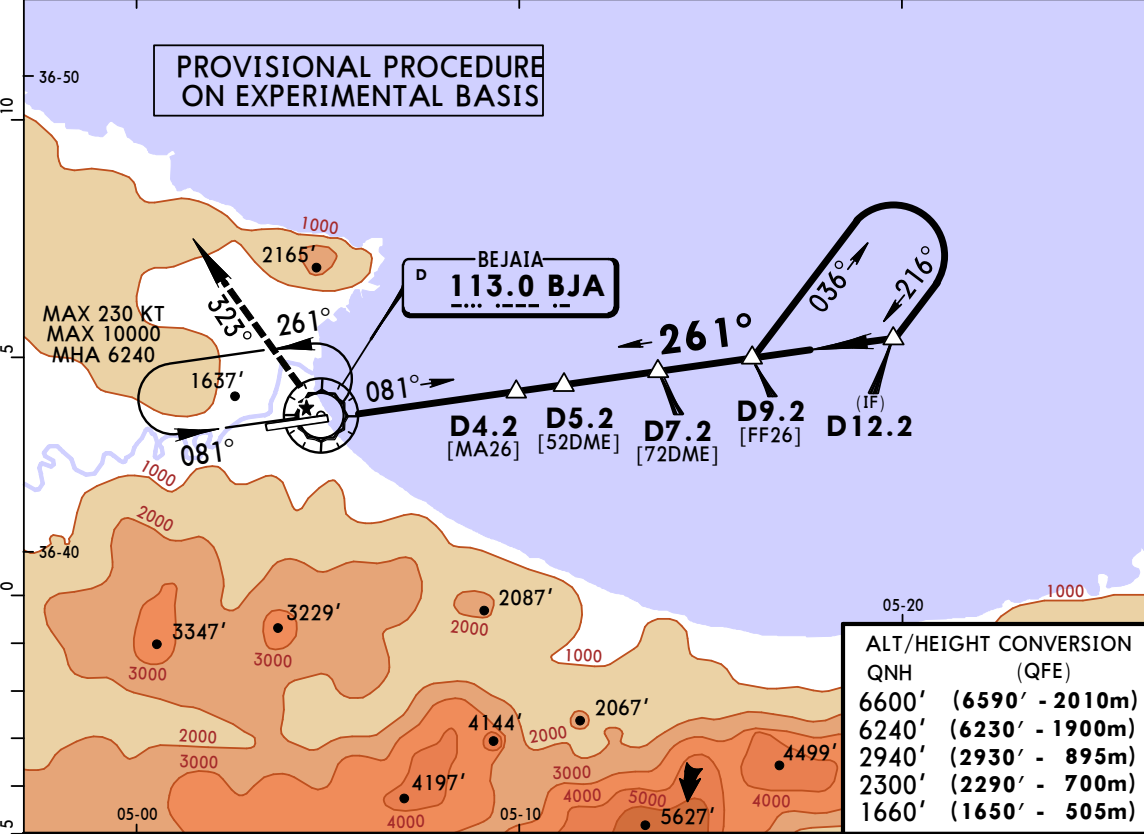
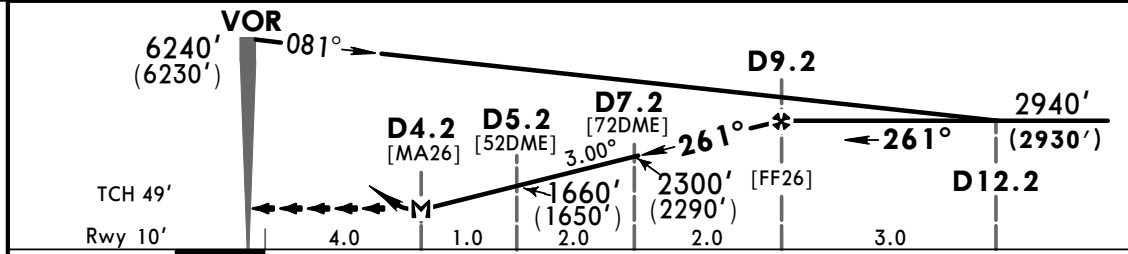


BEJAIA Tower					
118.9					
VOR BJA 113.0	Final Apch Crs 261°	Minimum Alt D9.2 2940'(2930')	MDA(H) 1360'(1350')	Apt Elev 20' Rwy 10'	<p>MSA BJA VOR</p>
MISSED APCH: Climb STRAIGHT AHEAD to VOR, then climb on R-323 to 6240'(6230'), then as directed. MAX 160 KT.					
Alt Set: hPa QNH on req (QFE) Trans level: By ATC Trans alt: 6600' (6590') DME required.					



ALT/HEIGHT CONVERSION	
QNH	(QFE)
6600'	(6590' - 2010m)
6240'	(6230' - 1900m)
2940'	(2930' - 895m)
2300'	(2290' - 700m)
1660'	(1650' - 505m)



Gnd speed-Kts	70	90	100	120	140	160	PAPI-L	160 KT MAX	BJA	6240'	BJA
Descent Angle	3.00°	372	478	531	637	849			↑	(6230')	↑
MAP at D4.2											on R-323

STRAIGHT-IN LANDING RWY 26				CIRCLE-TO-LAND			
				Prohibited South of airport			
MDA(H) 1360'(1350')							
A				Max Kts	MDA(H)		
B	RVR 5000m			100	1930'(1910') 5000m		
C				135	2060'(2040') 5000m		
D	NOT AUTHORIZED			180	2690'(2670') 5000m		
				D	NOT AUTHORIZED		

PANS OPS