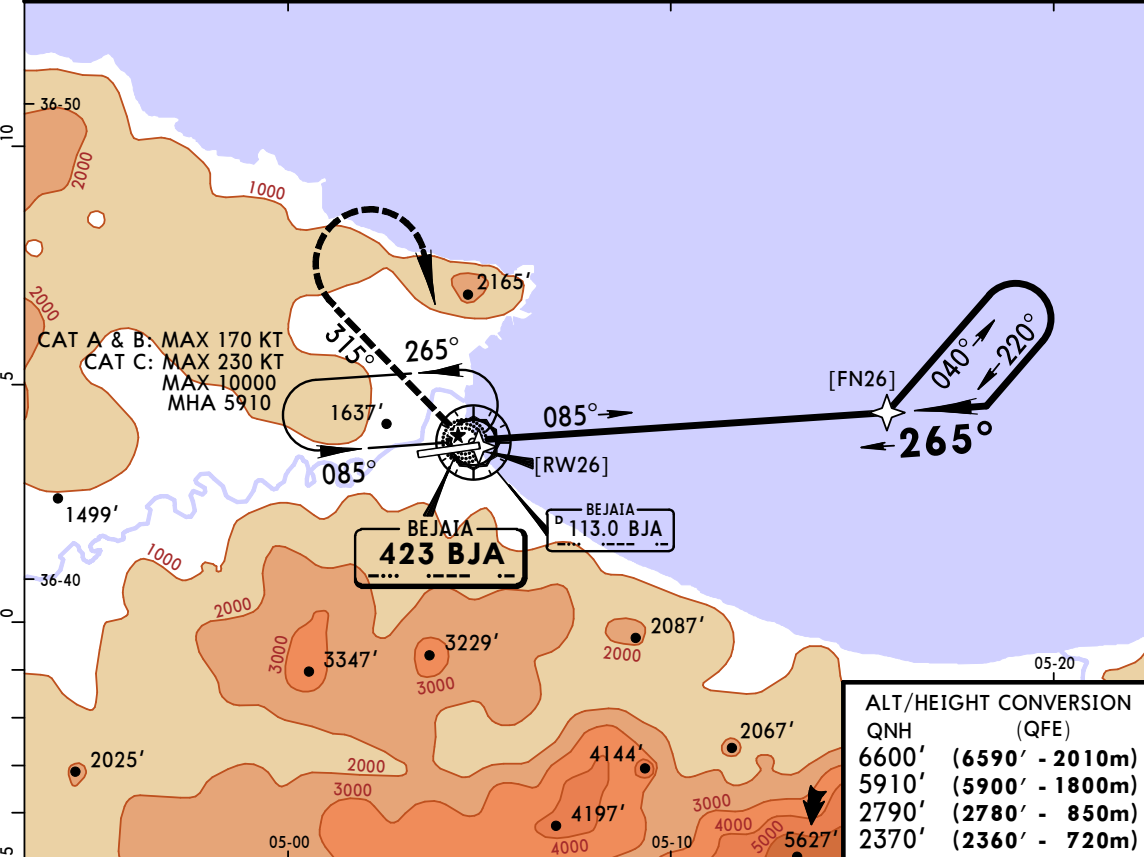
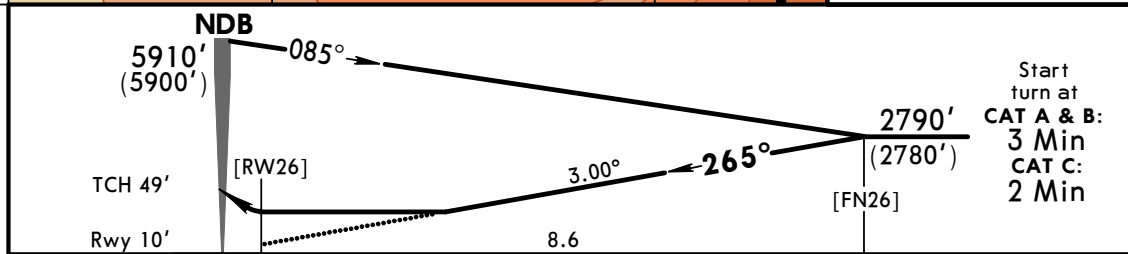


BEJAIA Tower 118.9					
NDB BJA 423	Final Apch Crs 265°	Minimum Alt No FAF	MDA(H) 1660' (1650')	Apt Elev 20' Rwy 10'	
MISSED APCH: Climb on 315° from NDB to 2370' (2360'), then turn RIGHT to rejoin NDB climbing to 5910' (5900').					MSA BJA NDB
Alt Set: hPa		QNH on req (QFE)	Trans level: By ATC	Trans alt: 6600' (6590')	



ALT/HEIGHT CONVERSION	
QNH	(QFE)
6600'	(6590' - 2010m)
5910'	(5900' - 1800m)
2790'	(2780' - 850m)
2370'	(2360' - 720m)



Gnd speed-Kts	70	90	100	120	140	160	PAPI-L	2370' (2360')
Descent Angle	3.00°	372	478	531	637	743		

STRAIGHT-IN LANDING RWY 26		CIRCLE-TO-LAND	
MDA(H) 1660' (1650')		Prohibited South of airport	
A	5000m	Max Kts	MDA(H)
B		100	1960' (1940') 5000m
C		135	2580' (2560') 5000m
D	180	NOT AUTHORIZED	
NOT AUTHORIZED		NOT AUTHORIZED	