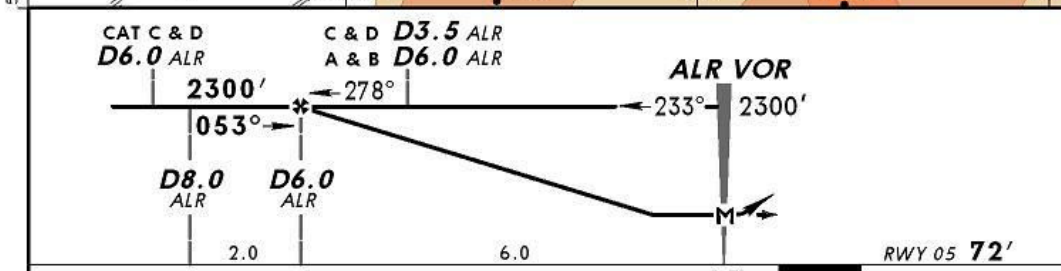
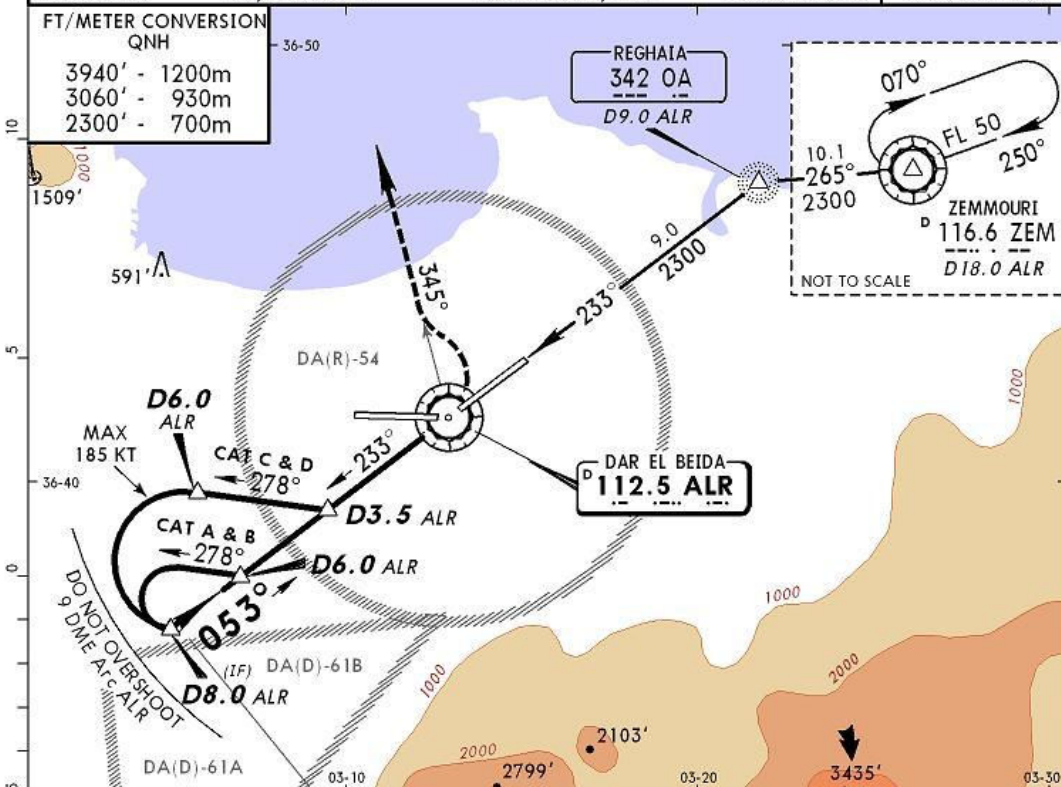


DAAG/ALG
HOUARI BOUMEDIENE

JEPPESEN
 22 AUG 08 **(13-1)**

ALGIERS, ALGERIA
VOR DME Rwy 05

ALGIERS Approach (R)		ALGIERS Tower		Ground	
121.4		118.7		121.8	
VOR ALR	Final Apch Crs	Minimum Alt	MDA(H)	Apt Elev	82'
112.5	053°	D6.0 ALR 2300' (2228')	460' (388')	Rwy 72'	
MISSED APCH: Turn LEFT to intercept R-345 ALR, maintain 3060' and as directed.					
Alt Set: MB	Rwy Elev: 3 MB	Trans level: By ATC	Trans alt: 3940'	MSA ZEM VOR	



Gnd speed-Kts	70	90	100	120	140	160	PAPI-L		ALR 112.5 R-345	
Descent Gradient	5.7%	404	520	577	693	808				924
MAP at ALR VOR										

STRAIGHT-IN LANDING RWY 05		CIRCLE-TO-LAND	
MDA(H) 460' (388')		Not authorized South of airport	
PANS OPS 3	A		Max Kts
	B	2400m	100
	C		135
	D	2800m	205
		MDA(H)	
		650' (568')	2400m
		850' (768')	3600m
		850' (768')	4000m