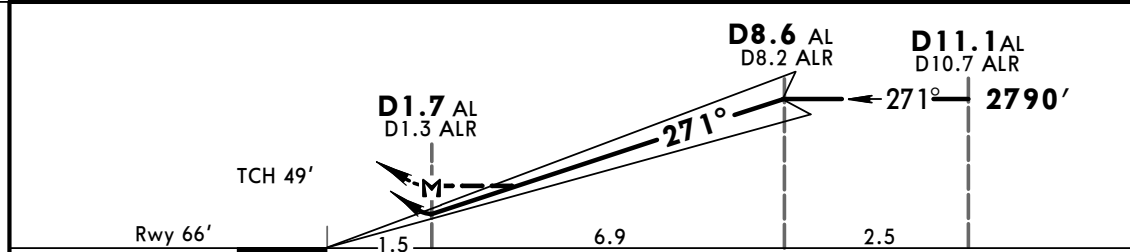
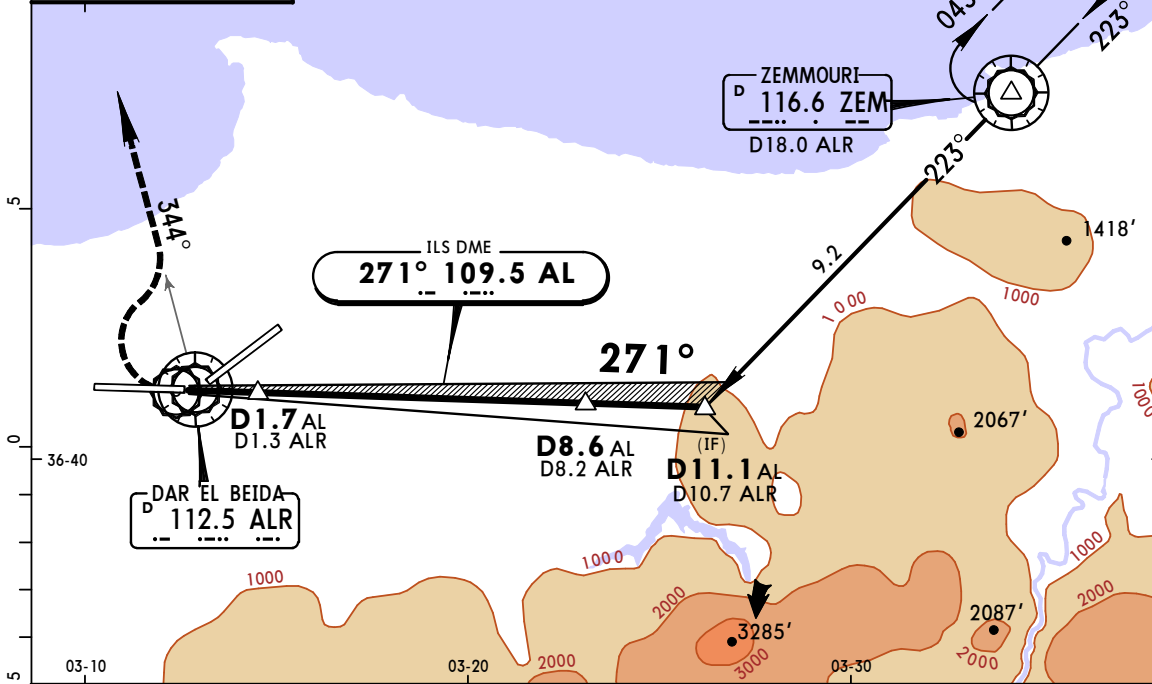


ATIS 128.52		ALGIERS Approach (R) 121.4		ALGIERS Tower 118.7		Ground 121.8	
LOC AL 109.5	Final Apch Crs 271°	GS D8.6 AL (2724')	ILS DA(H) Refer to Minimums	Apt Elev 82' Rwy 66'			
MISSED APCH: As soon as possible turn RIGHT to intercept R-344 ALR, maintain 2470' and as directed. MAX 185 KT.							
Alt Set: hPa		Rwy Elev: 2 hPa		Trans level: By ATC		Trans alt: 3940'	

FT/METER CONVERSION
QNH

3940'	-	1200m
2790'	-	850m
2470'	-	750m



Gnd speed-Kts	70	90	100	120	140	160			
ILS GS or LOC Descent Angle	3.00°	372	478	531	637	743	849	PAPI-L	As soon as possible
MAP at D1.7 AL/D1.3 ALR									2470' ALR on 112.5 R-344

STRAIGHT-IN LANDING RWY 27		CIRCLE-TO-LAND	
ILS DA(H) A: 266' (200') C: 286' (220') B: 276' (210') D: 296' (230')		LOC (GS out) MDA(H) 570' (504')	
RVR 1200m		Not authorized South of airport	
A		Max Kts	MDA(H)
B		100	650' (568') 2500m
C		135	720' (638') 2900m
D		180	1370' (1288') 5000m
		205	