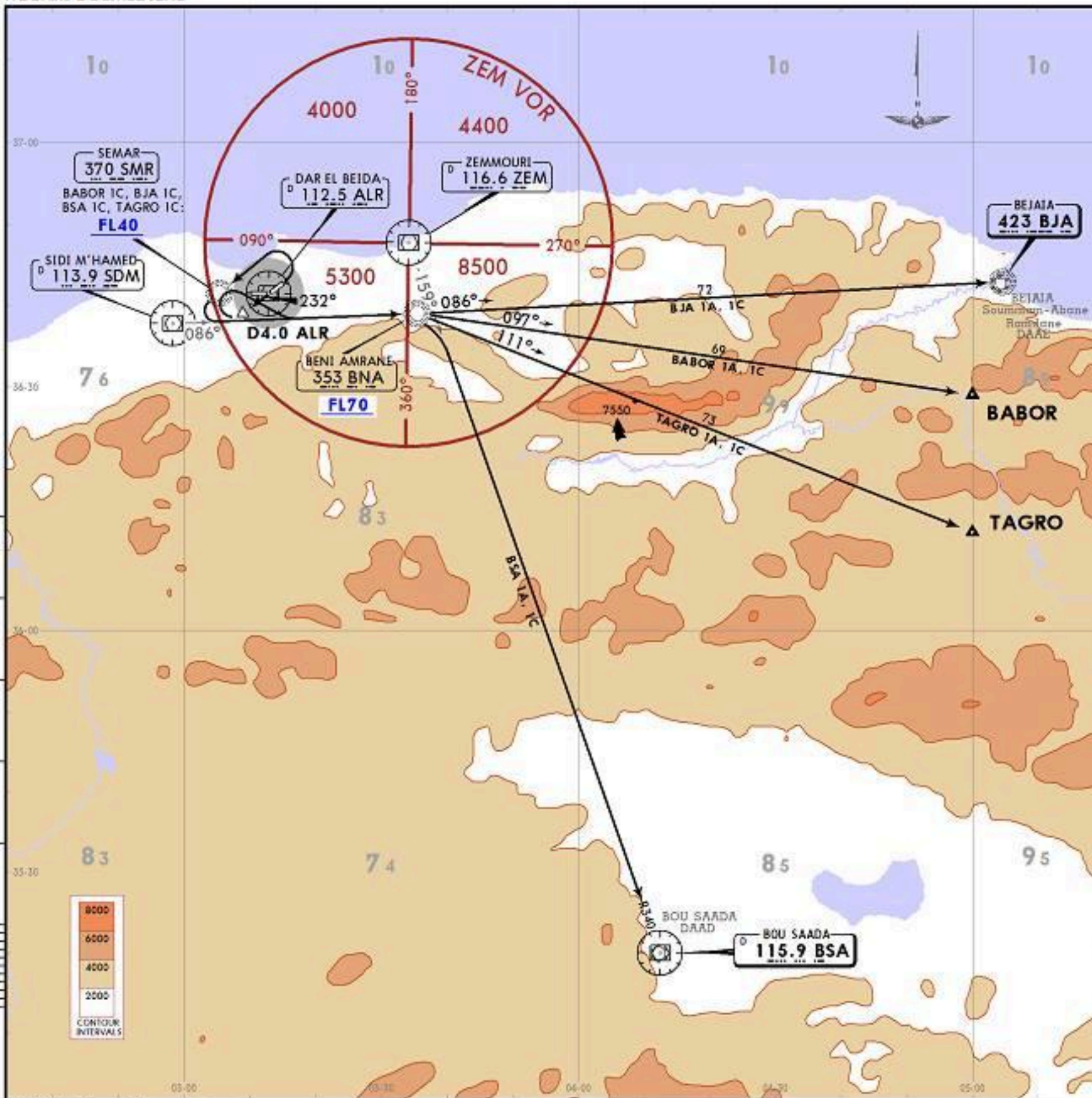


Apt Elev 82 Trans alt: 3940



- BABOR 1A [BAB01A]
- BABOR 1C [BAB01C]
- BJA 1A [BJA1A]
- BJA 1C [BJA1C]
- BSA 1A [BSA1A]
- BSA 1C [BSA1C]
- TAGRO 1A [TAGR1A]
- TAGRO 1C [TAGR1C]
- DEPARTURES

SID	RWY	ROUTING
BABOR 1A	23	To ALR VOR, ALR R232 to D4.0 ALR, turn RIGHT, intercept SDM R086 to BNA, then to BABOR.
BABOR 1C	05	Turn LEFT to SMR, turn LEFT intercept SDM R086 to BNA, then to BABOR.
BJA 1A	23	To ALR VOR, ALR R232 to D4.0 ALR, turn RIGHT, intercept SDM R086 to BNA, then to BJA.
BJA 1C	05	Turn LEFT to SMR, turn LEFT, intercept SDM R086 to BNA, then to BJA.
BSA 1A	23	To ALR, ALR R232 to D4.0 ALR, turn RIGHT, intercept SDM R086 to BNA, then to BSA.
BSA 1C	05	Turn LEFT to SMR, turn LEFT, intercept SDM R086 to BNA, then to BSA.
TAGRO 1A	23	To ALR, ALR R232 to D4.0 ALR, turn RIGHT, intercept SDM R086 to BNA, then to TAGRO.
TAGRO 1C	05	Turn LEFT to SMR, turn LEFT, intercept SDM R086 to BNA, then to TAGRO.

CHANGES: New Format; SIDs completely revised.